



ACME
FLUID SYSTEMS



AN ISO 9001:2008

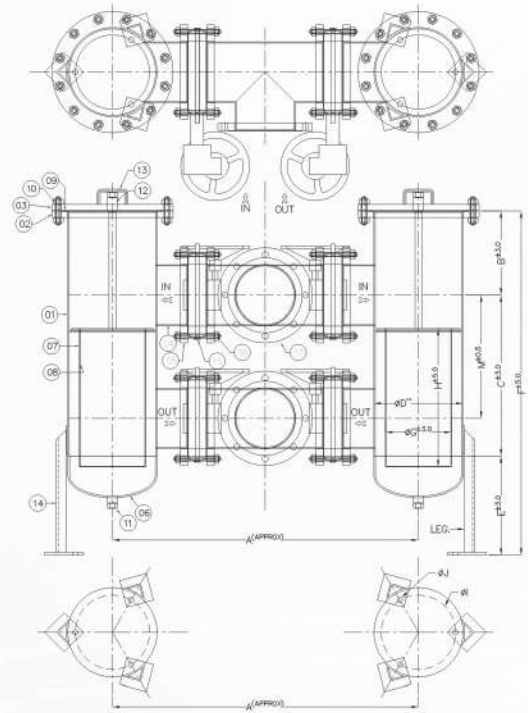
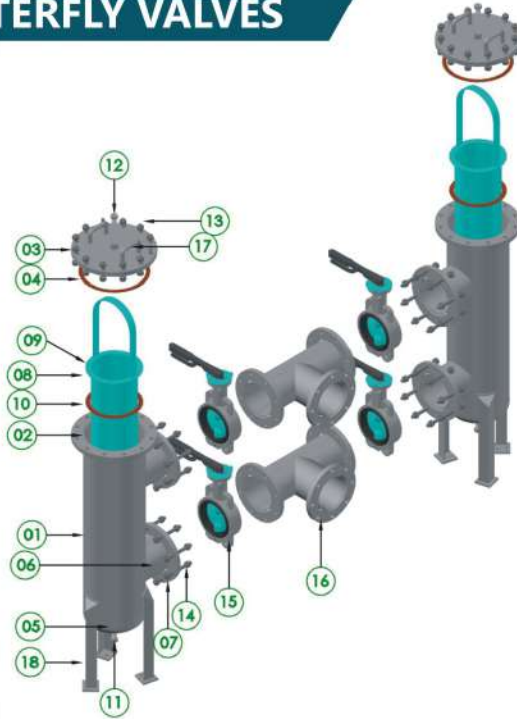
Duplex Basket Strainers with Butterfly Valves



***Our Precision
Your Advantage***

www.strainersindia.com

DUPLEX BASKET STRAINERS WITH BUTTERFLY VALVES



Duplex Basket strainers are the type of basket strainers that have two baskets for collection of solid debris. It provides ease of cleaning as it can be cleaned anytime as per the conveniences. Our duplex or double basket strainers work quite efficiently because the collection of dirt changes from one basket to another with the assistance of butterfly valves. All you need to do is change the flow of fluid from one basket to another by using the butterfly valve.

Duplex basket strainers with butterfly valves are preferable for factories or places where flow of fluid cannot be stopped or shut down when the basket fills up. In this type of strainer, flow is never required to be shut down because the dirt or debris can be collected in the second basket after the first one gets filled. Due to the presence of Large filtration area, pressure drop is minimal. We offer various modifications to our clients as per their needs and preferences.

SIZE		DIMENSIONS						ELEMENT		PCD	HOLE	NO. OF LEG	
INCH	NB	A	B	C	ØD	E	F	M	ØG	H	ØI	ØJ	
4"	100	905	180	448	8"	300	928	375	150	406	185	16	6
6"	150	1075	230	537	10"	350	1117	430	205	464	240	18	6
8"	200	1105	305	582	12"	360	1247	445	240	502	270	18	6
10"	250	1555	305	888	16"	385	1578	650	320	800	355	20	6
12"	300	1690	325	820	18"	475	1620	633	390	733	400	22	6
14"	350	1764	350	910	20"	525	1785	700	430	812	455	22	6
16"	400	2005	400	1025	24"	600	2025	800	480	862	555	25	6
24"	600	2640	600	1572	30"	700	2872	1070	640	1290	680	25	6

FEATURES :

- Continuous flow, No need to stop systems for cleaning
- Low Pressure Loss
- Removable Filter element
- Top removal of screen
- Wire mesh
- Alteration of Duplex Basket Strainer
- Low Pressure capacity upto 16 Bar

OPTIONS:

- Hinged cover or davit assembly for easier maintenance
- Drain/Vent Valves
- D.P Tapings/ Gauge
- Back-flushing system for manual
- Steam jacket for highly viscous fluids
- Rotated or offset nozzle placement
- Coatings and linings available upon request

MATERIAL OF CONSTRUCTION

No.	Description	Material	
1	Shell	MS	SS304
2	Shell Flange	MS	SS304
3	Cover Flange	MS	SS304
4	Cover Gasket	Non Asbestos	Non Asbestos
5	Deshend	MS	SS304
6	In-Out Nozzle	MS	SS304
7	Nozzle Flange	MS	SS304
8	Element	SS304/SS316	SS304
9	Element Ring	SS304/SS316	SS304
10	Element Gasket	Non Asbestos	Non Asbestos
11	Drain	ASTM A105	A182 F304
12	Vent	ASTM A105	A182 F304
13	Stud & Nut (Shell Flange)	ASTM A193/194/B7/2H/IS 1367	SS304
14	Stud & Nut (Valve Flange)	ASTM A193/194/B7/2H/IS 1367	SS304
15	Butterfly Valve	CI / SGI	
16	Equal Tee	MS	SS304
17	Cover Handle	MS	SS304
18	Leg	MS	SS304

Authorised Dealer



WORKS : ACME Fluid Systems, 152/2, Road No.5, GIDC Kathwada, Ahmedabad-382430, Gujarat (INDIA).
Ph. : +91 79 22870005 • Mobile : +91 99796 64455. E-mail: arpit@strainersindia.com • mehrishiarpit@gmail.com

SALES OFFICE : C-151, 2nd Floor, Sector 10, Noida 201301, Uttar Pradesh (India).
Ph. : +91 120 4313341, Telefax : +91 120 4313342, Mob.: +91 98100 57364. Email : rakesh@strainersindia.com

www.strainersindia.com