

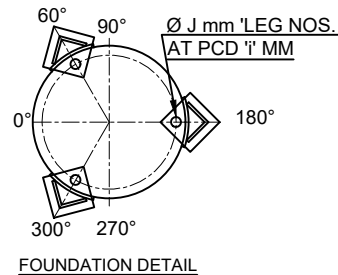
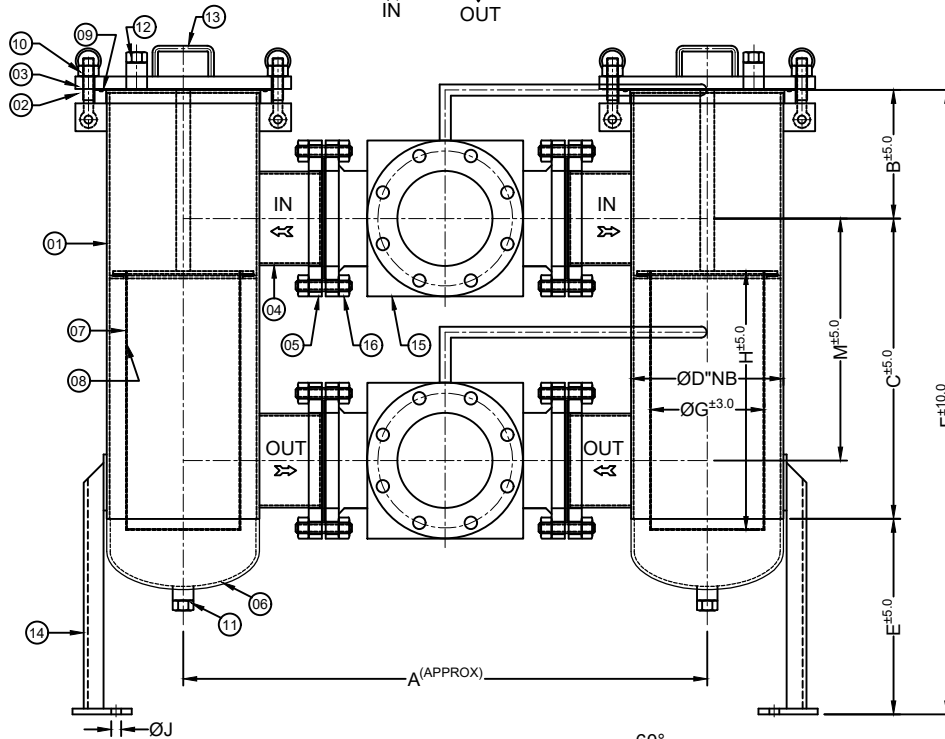
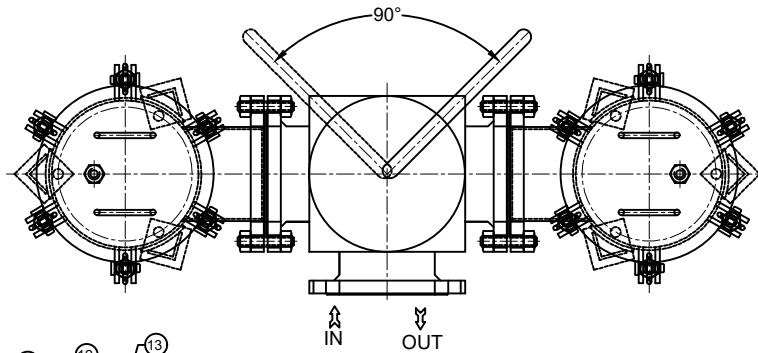
- NOTE:-
1. ALL DIMENSIONS ARE IN mm. IF NOT SPECIFIED.
 2. HYDRO TEST PRESSURE 15 kg/cm²
 3. END CONNECTION AS PER ASME B 16.5, 150# RF
 4. FILTRATION AREA(P.SHEET) 5 TIMES PIPE INLET AREA.

MATERIAL OF CONSTRUCTION

SR. NO.	DISCRIPTION	MATERIAL		QTY.
		CARBON STEEL	STAINLESS STEEL	
1	SHELL	MS	SS304 SS316	2
2	SHELL FLANGE	MS	SS304 SS316	2
3	COVER FLANGE	MS	SS304 SS316	2
4	IN-OUT NOZZLE	MS	SS304 SS316	4
5	NOZZLE FLANGE	MS	SS304 SS316	4
6	DISHEND	MS	SS304 SS316	2
7	P.SHEET	SS 304 (Ø6mm Holes)	SS304 SS316	2
8	WIRE MESH	SS 304	SS304 SS316	2
9	GASKET 'O' RING	NEOPRENE		2
10	EYE BOLT& NUT	IS 1367	SS304 SS316	--
11	DRAIN	ASTM A 105	SS304 SS316	2
12	VENT	ASTM A 105	SS304 SS316	2
13	HANDLE	MS	SS304 SS316	--
14	LEG	MS	SS304 SS316	2
15	BALL VALVE	WCB	SS304 SS316	2
16	STUD&NUT(VALVE)	IS 1367	IS 1367(ZINCPLATED)	--

SIZE	DIMENSION	ELEMENT	HOLE DIMENSION		
			I	ØJ	K
1"	25	447 105 255 4" 185 545 214 64 238	570	16	100
1-1/2"	40	531 125 285 6" 265 675 227 105 260	684	16	110
2"	50	581 150 316 6" 265 731 266 105 290	734	16	110
2-1/2"	65	636 160 335 6" 255 750 280 105 295	789	16	110

CLIENT :-	QTY. :-			
PO.NO :-	W..O.NO:-			
SCALE :- NTS	SHEET :-1:1	DRAWING No.		
FILE :-	DATE :- 27/03/2026	AFS-2501-150# - STD		
TITLE :- DUPLEX BASKET FILTER WITH 3 WAY BALL VALVE ASME 150#		REV. 00		
PROJECTION :-				
 PLOT NO-152/2, ROAD NO-5, G.I.D.C. KATHWADA, AHMEDABAD. www.strainersindia.com		NAME		
		DATE		
		ACAD BY	GPP	27/03/2026
		CHED BY	GPP	27/03/2026
APPD BY	APT	27/03/2026		



NOTE:-

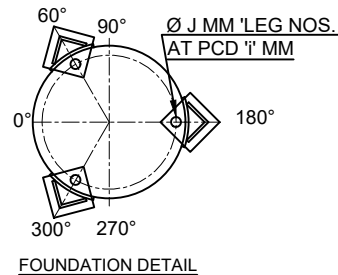
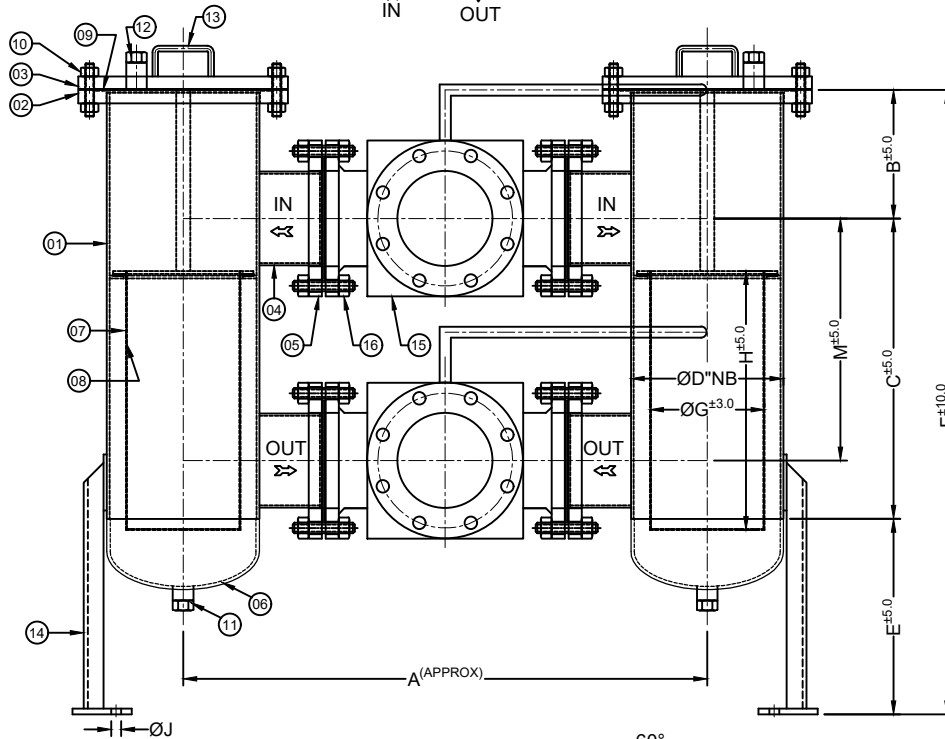
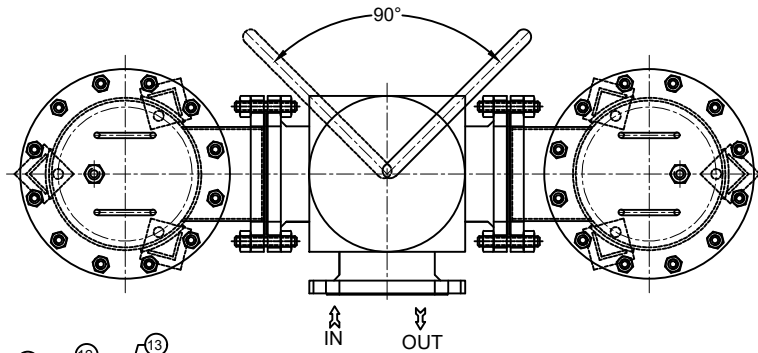
1. ALL DIMENSIONS ARE IN mm. IF NOT SPECIFIED.
2. HYDRO TEST PRESSURE 15 kg/cm²
3. END CONNECTION AS PER ASME B 16.5, 150# RF
4. FILTRATION AREA(P.SHEET) 5 TIMES PIPE INLET AREA.

MATERIAL OF CONSTRUCTION

SR. NO.	DISCRIPTION	CARBON STEEL		STAINLESS STEEL		QTY.
1	SHELL	MS		SS304	SS316	2
2	SHELL FLANGE	MS		SS304	SS316	2
3	COVER FLANGE	MS		SS304	SS316	2
4	IN-OUT NOZZLE	MS		SS304	SS316	4
5	NOZZLE FLANGE	MS		SS304	SS316	4
6	DISHEND	MS		SS304	SS316	2
7	P.SHEET	SS 304 (Ø6mm Holes)		SS304	SS316	2
8	WIRE MESH	SS 304		SS304	SS316	2
9	GASKET 'O' RING	NEOPRENE				2
10	EYE BOLT& NUT	IS 1367		SS304	SS316	--
11	DRAIN	ASTM A 105		SS304	SS316	2
12	VENT	ASTM A 105		SS304	SS316	2
13	HANDLE	MS		SS304	SS316	--
14	LEG	MS		SS304	SS316	6
15	BALL VALVE	WCB		SS304	SS316	2
16	STUD&NUT(VALVE)	IS 1367		IS 1367(ZINCPLATED)		--

SIZE	DIMENSION								ELEMENT		PCD HOLE		
	INCH	NB	A	B	C	ØD	E	F	M	ØG	H	ØI	ØJ
3"	80	757	180	400	8"	275	855	325	150	350	185	16	
4"	100	762	180	450	8"	310	940	360	150	400	185	16	
6"	150	938	230	537	10"	350	1117	430	205	465	240	18	
8"	200	1015	300	640	12"	450	1390	500	240	525	270	20	

CLIENT :-		QTY. :-		
PO.NO :-		W..O.NO:-		
SCALE :- NTS	SHEET :-1:1	DRAWING No.	REV.	
FILE :-	DATE :- 27/03/2026	AFS-2501-150# - STD	00	
TITLE :- DUPLEX BASKET FILTER WITH 3 WAY BALL VALVE ASME 150#		PROJECTION :-		
ACME FLUID SYSTEMS www.strainersindia.com		PLOT NO-152/2, ROAD NO-5, G.I.D.C. KATHWADA, AHMEDABAD.		
			NAME	DATE
		ACAD BY	GPP	27/03/2026
		CHED BY	GPP	27/03/2026
	APPD BY	APT	27/03/2026	



NOTE:-

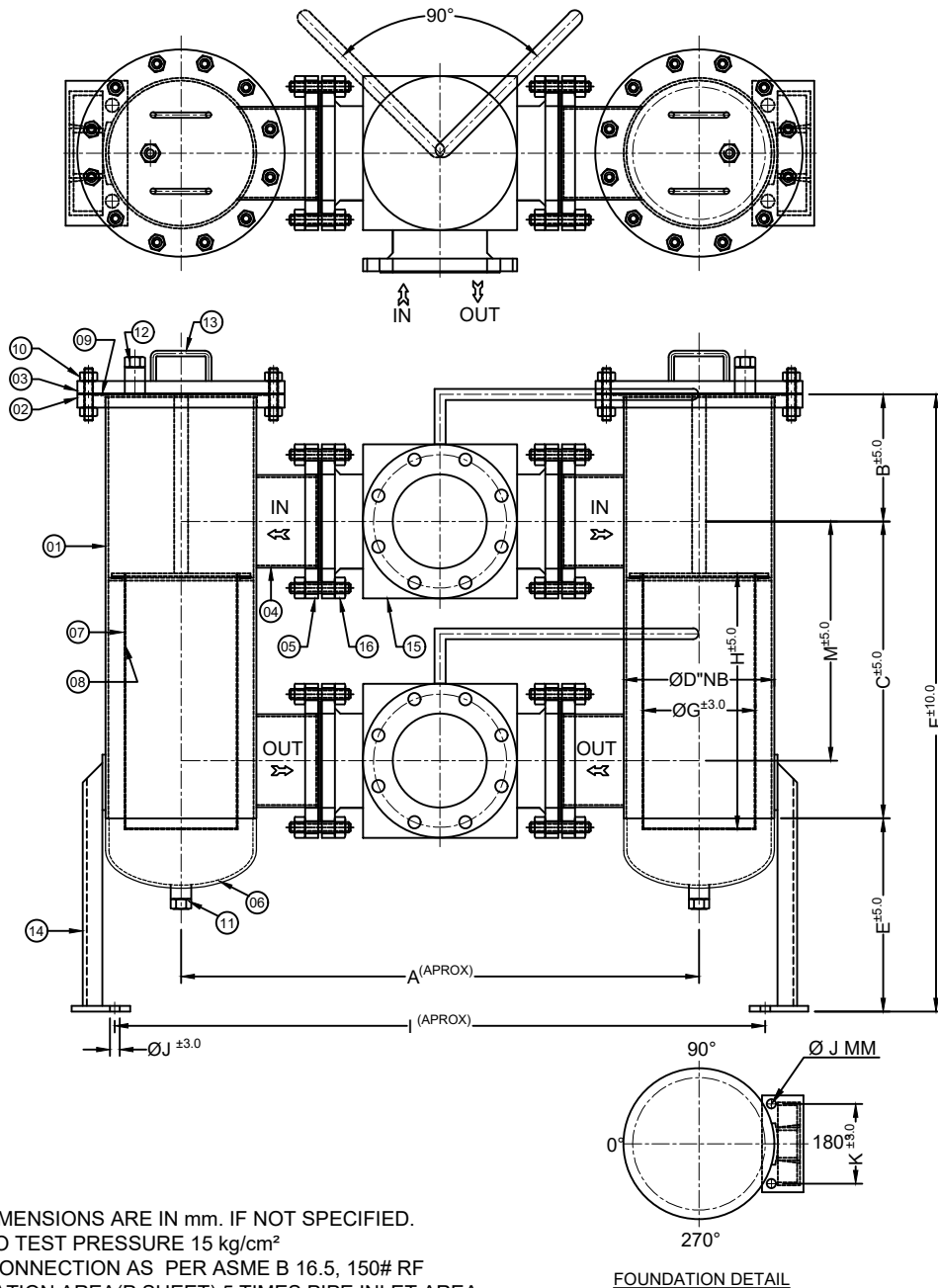
1. ALL DIMENSIONS ARE IN mm. IF NOT SPECIFIED.
2. HYDRO TEST PRESSURE 15 kg/cm²
3. END CONNECTION AS PER ASME B 16.5, 150# RF
4. FILTRATION AREA(P.SHEET) 5 TIMES PIPE INLET AREA.

MATERIAL OF CONSTRUCTION

SR. NO.	DISCRIPTION	MATERIAL		QTY.	
		CARBON STEEL	STAINLESS STEEL		
1	SHELL	MS	SS304	2	
2	SHELL FLANGE	MS	SS304	2	
3	COVER FLANGE	MS	SS304	2	
4	IN-OUT NOZZLE	MS	SS304	4	
5	NOZZLE FLANGE	MS	SS304	4	
6	DISHEND	MS	SS304	2	
7	P.SHEET	SS304	SS304	2	
8	WIRE MESH	SS304	SS304	2	
9	GASKET	NON ASBESTOS		2	
10	STUD&NUT(SHELL)	IS 1367	SS304	SS316	--
11	DRAIN	ASTM A 105	SS304	SS316	2
12	VENT	ASTM A 105	SS304	SS316	2
13	HANDLE	MS	SS304	SS316	--
14	LEG	MS	SS304	SS316	6
15	BALL VALVE	WCB	SS304	SS316	2
16	STUD&NUT(VALVE)	IS 1367	IS 1367(ZINCPLATED)		--

SIZE	INCH	NB	DIMENSION					ELEMENT		PCD HOLE		
			A	B	C	ØD	E	F	M	ØG	H	ØI
3"	80	757	180	400	8"	275	855	325	150	350	185	16
4"	100	762	180	450	8"	310	940	360	150	400	185	16
6"	150	938	230	537	10"	350	1117	430	205	465	240	18
8"	200	1015	300	640	12"	450	1390	500	240	525	270	20

CLIENT :-		QTY. :-	
PO.NO :-		W..O.NO:-	
SCALE :- NTS	SHEET :-1:1	DRAWING No.	REV.
FILE :-	DATE :- 27/03/2026	AFS-2501-150# - STD	00
TITLE :- DUPLEX BASKET FILTER WITH 3 WAY BALL VALVE ASME 150#		PROJECTION :-	
 ACME FLUID SYSTEMS www.strainersindia.com		PLOT NO-152/2, ROAD NO-5, G.I.D.C. KATHWADA, AHMEDABAD.	
		NAME	DATE
		ACAD BY	GPP 27/03/2026
		CHED BY	GPP 27/03/2026
APPD BY	APT 27/03/2026		



- NOTE:-
1. ALL DIMENSIONS ARE IN mm. IF NOT SPECIFIED.
 2. HYDRO TEST PRESSURE 15 kg/cm²
 3. END CONNECTION AS PER ASME B 16.5, 150# RF
 4. FILTRATION AREA(P.SHEET) 5 TIMES PIPE INLET AREA.

FOUNDATION DETAIL

MATERIAL OF CONSTRUCTION

SR. NO.	DISCRIPTION	MATERIAL		QTY.	
		CARBON STEEL	STAINLESS STEEL		
1	SHELL	MS	SS304	2	
2	SHELL FLANGE	MS	SS304	2	
3	COVER FLANGE	MS	SS304	2	
4	IN-OUT NOZZLE	MS	SS304	4	
5	NOZZLE FLANGE	MS	SS304	4	
6	DISHEND	MS	SS304	2	
7	P.SHEET	SS304	SS304	2	
8	WIRE MESH	SS304	SS304	2	
9	GASKET	NON ASBESTOS		2	
10	STUD&NUT(SHELL)	IS 1367	SS304	SS316	--
11	DRAIN	ASTM A 105	SS304	SS316	2
12	VENT	ASTM A 105	SS304	SS316	2
13	HANDLE	MS	SS304	SS316	--
14	LEG	MS	SS304	SS316	2
15	BALL VALVE	WCB	SS304	SS316	2
16	STUD&NUT(VALVE)	IS 1367	IS 1367(ZINCPLATED)		--

SIZE	NB	DIMENSION							ELEMENT		HOLE DIMENSION		
		A	B	C	ØD	E	F	M	ØG	H	I	ØJ	K
1"	25	447	105	255	4"	185	545	214	64	238	570	16	100
1-1/2"	40	531	125	285	6"	265	675	227	105	260	684	16	110
2"	50	581	150	316	6"	265	731	266	105	290	734	16	110
2-1/2"	65	636	160	335	6"	255	750	280	105	295	789	16	110

CLIENT :-		QTY. :-	
PO.NO :-		W..O.NO:-	
SCALE :- NTS	SHEET :-1:1	DRAWING No.	REV.
FILE :-	DATE :- 27/03/2026	AFS-2501-150# - STD	00
TITLE :- DUPLEX BASKET FILTER WITH 3 WAY BALL VALVE ASME 150#		PROJECTION :-	
 ACME FLUID SYSTEMS www.strainersindia.com	PLOT NO-152/2, ROAD NO-5, G.I.D.C. KATHWADA, AHMEDABAD.		
	NAME	DATE	
	ACAD BY	GPP 27/03/2026	
CHED BY	GPP 27/03/2026		
APPD BY	APT 27/03/2026		