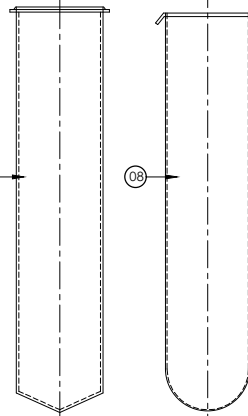
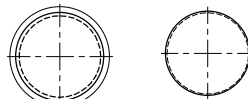
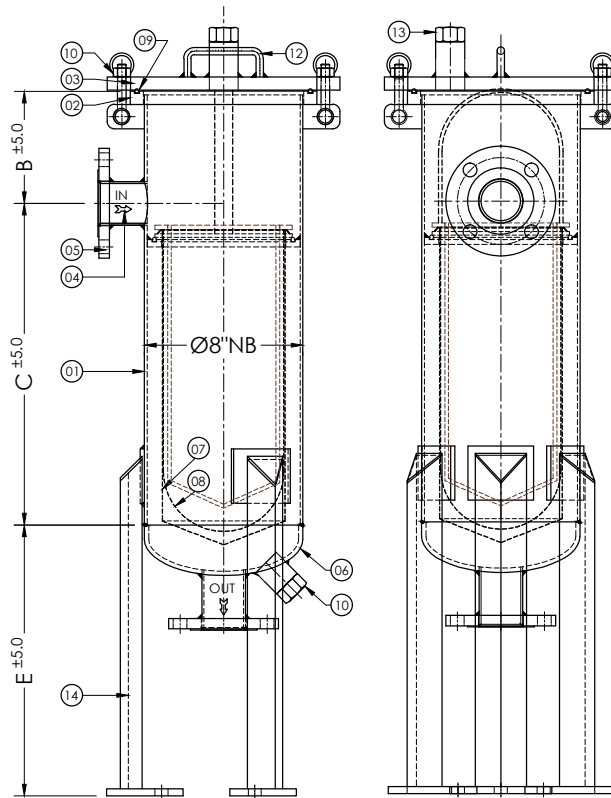


'O'RING CAGE BAG
BAG CAGE



BAG CAGE

BAG



MATERIAL OF CONSTRUCTION

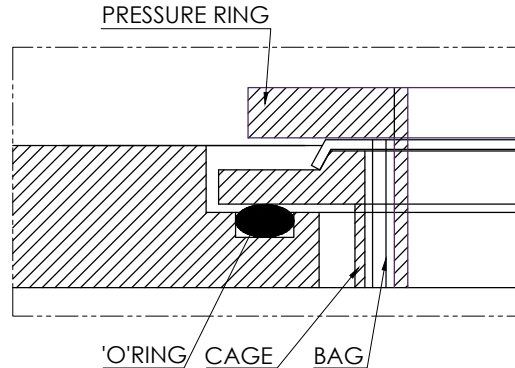
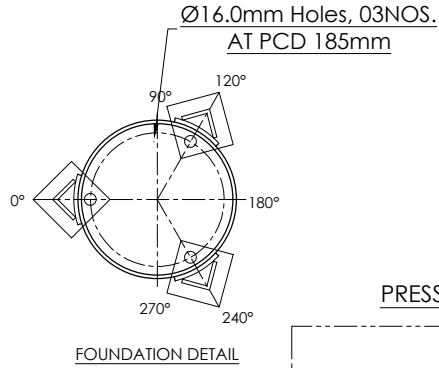
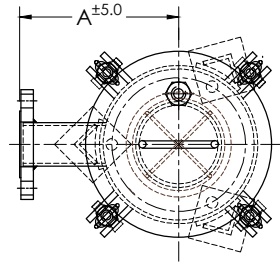
SR. NO.	DISCRIPTION	CARBON STEEL	STAINLESS STEEL	QTY.
1	SHELL	MS	SS 304	1
2	SHELL FLANGE	MS	SS 304	1
3	COVER FLANGE	MS	SS 304	1
4	IN-OUT NOZZLE	MS	SS 304	2
5	NOZZLE FLANGE	MS	SS 304	2
6	DISHEND	MS	SS 304	1
7	BAG CAGE	SS304(Ø6HOLE)	SS 304	1
8	BAG	PP	(Ø7" X 17"LONG)	1
9	'O' RING	EPDM		1
10	EYE BOLT & NUT	IS 1367		4
11	DRAIN	ASTM A 105	SS 304	1
12	VENT	ASTM A 105	SS 304	1
13	HANDLE	MS	SS 304	1
14	LEG	MS	SS 304	3

SIZE		DIMENSION			
INCH	NB	A	B	C	ØE
1"	25	160	155	500	375
1-1/2"	40	175	180	500	375
2"	50	175	180	500	375
2-1/2"	65	200	180	500	375
3"	80	200	180	500	400

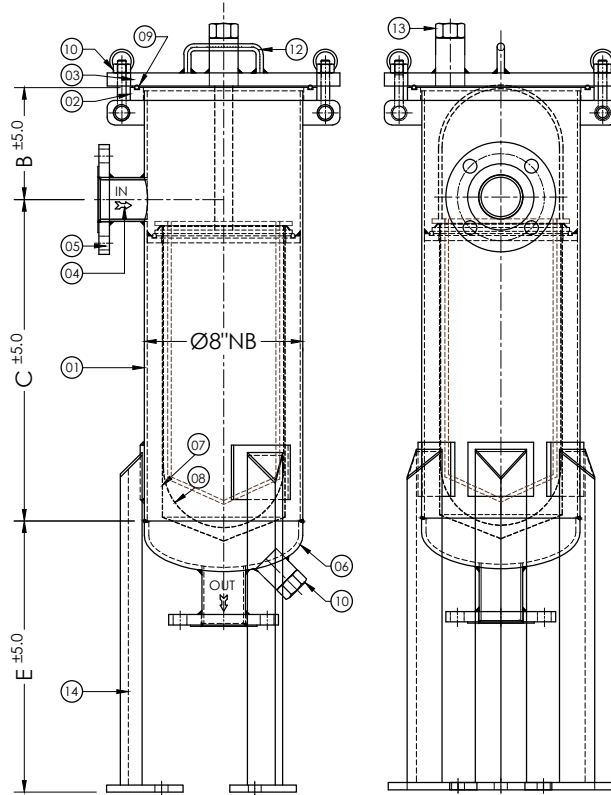
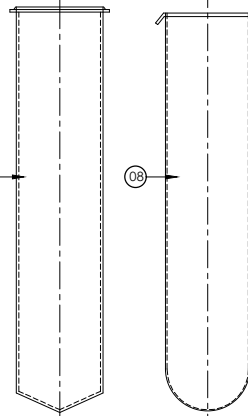
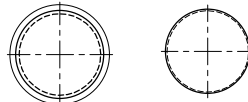
NOTE :-

1. ALL DIMENSIONS ARE IN mm. IF NOT SPECIFIED.
2. END CONNECTION AS PER ANSI B 16.5,150# RF

CLIENT :-		QTY:-	
P.O. No:-		W.O.NO.:-	
SCALE :-	SHEET :-	DRAWING No.	REV.
FILE :-	DATE :- 27/03/2026	AFS-2503-150#1BAG	00
TITLE :- 1BAG ANSI 150# BAG TYPE FILTER FOR (Ø7" X 17"LONG)		PROJECTION :-	
 ACME FLUID SYSTEMS www.strainersindia.com	PLOT NO-152/2	NAME	
	ROAD-5,G.I.D.C.	GPP	DATE
	KATHWADA,	GPP	27/03/2026
AHMEDABAD.	APPD BY	APT	27/03/2026



BAG CAGE



MATERIAL OF CONSTRUCTION

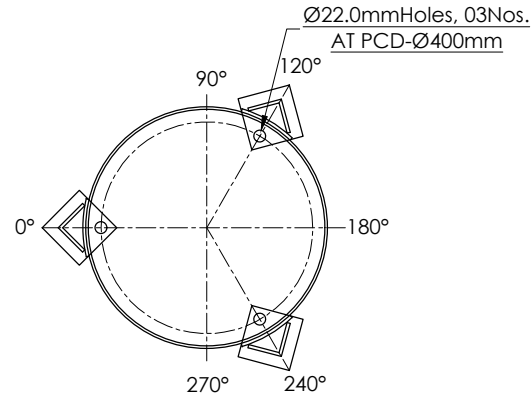
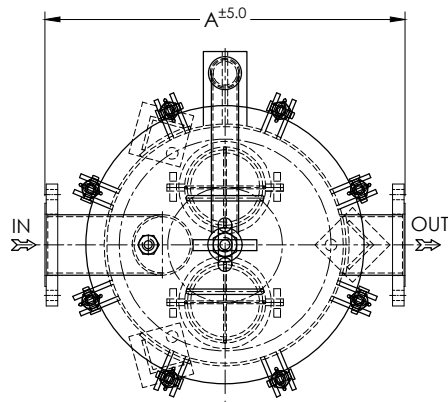
SR. NO.	DISCRIPTION	CARBON STEEL	STAINLESS STEEL	QTY.
1	SHELL	MS	SS 304 SS 316	1
2	SHELL FLANGE	MS	SS 304 SS 316	1
3	COVER FLANGE	MS	SS 304 SS 316	1
4	IN-OUT NOZZLE	MS	SS 304 SS 316	2
5	NOZZLE FLANGE	MS	SS 304 SS 316	2
6	DISHEND	MS	SS 304 SS 316	1
7	BAG CAGE	SS304(Ø6HOLE)	SS 304 SS 316	1
8	BAG	PP	(Ø7" x 32"LONG)	1
9	'O' RING	NEOPRENE		1
10	EYE BOLT & NUT	IS 1367		4
11	DRAIN	ASTM A 105	SS 304 SS 316	1
12	VENT	ASTM A 105	SS 304 SS 316	1
13	HANDLE	MS	SS 304 SS 316	1
14	LEG	MS	SS 304 SS 316	3

SIZE		DIMENSION			
INCH	NB	A	B	C	ØE
1"	25	160	155	890	375
1-1/2"	40	175	180	890	375
2"	50	175	180	890	375
2-1/2"	65	200	180	890	375
3"	80	200	180	890	400

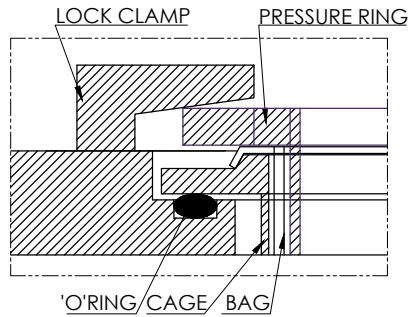
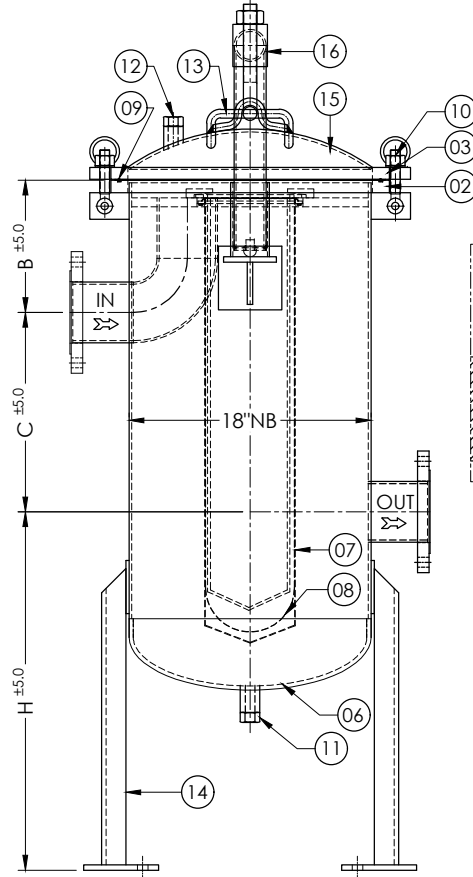
NOTE :-

- ALL DIMENSIONS ARE IN mm. IF NOT SPECIFIED.
- END CONNECTION AS PER ANSI B 16.5,150# RF

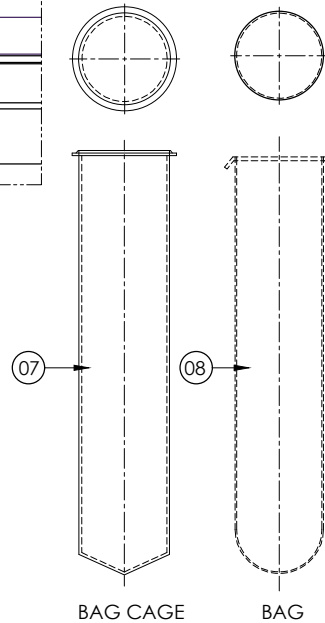
CLIENT :-		QTY:-	
P.O. No:-		W.O.NO.:-	
SCALE :-	SHEET :-	DRAWING No.	REV.
FILE :-	DATE :- 27/03/2026	AFS-2503-150#1BAG	00
TITLE :- 1BAG ANSI 150# BAG TYPE FILTER FOR (Ø7" x 32" LONG)		PROJECTION :-	
<p>ACME FLUID SYSTEMS www.strainersindia.com</p>	PLOT NO-152/2 ROAD-5,G.I.D.C. KATHWADA, AHMEDABAD.	NAME	DATE
		ACAD BY GPP	27/03/026
		CHED BY GPP	27/03/026
		APPD BY APT	27/03/026



FOUNDATION DETAILS.



BAG LOCK CLAMP



MATERIAL OF CONSTRUCTION

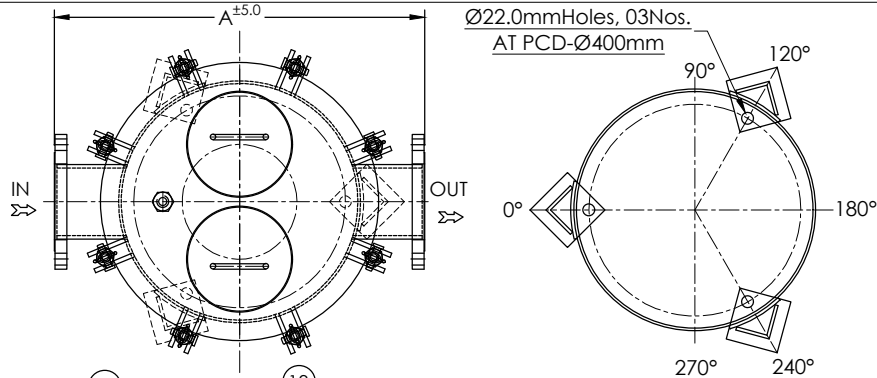
SR. NO.	DISCRIPTION	CARBON STEEL		STAINLESS STEEL		QTY.
1	SHELL	MS		SS 304	SS 316	1
2	SHELL FLANGE	MS		SS 304	SS 316	1
3	COVER FLANGE	MS		SS 304	SS 316	1
4	IN-OUT NOZZLE	MS		SS 304	SS 316	2
5	NOZZLE FLANGE	MS		SS 304	SS 316	2
6	DISHEND	MS		SS 304	SS 316	1
7	BAG CAGE	SS304(Ø6mm Hole)		SS 304	SS 316	2
8	BAG	PP		(Ø7" x 32"LONG)		2
9	'O' RING	EPDM				1
10	EYE BOLT & NUT	IS 1367				8
11	DRAIN	ASTM A 105		SS 304	SS 316	1
12	VENT	ASTM A 105		SS 304	SS 316	1
13	HANDLE	MS		SS 304	SS 316	2
14	LEG	MS		SS 304	SS 316	3
15	CROWN	MS		SS 304	SS 316	1
16	DAVIT ARM	MS		SS 304	SS 316	1

SIZE		DIMENSION			
INCH	MM	A	B	C	H
1-1/2"	40	620	165	500	650
2"	50	630	200	500	625
2-1/2"	65	640	225	500	600
3"	80	650	225	500	595
4"	100	680	225	450	645

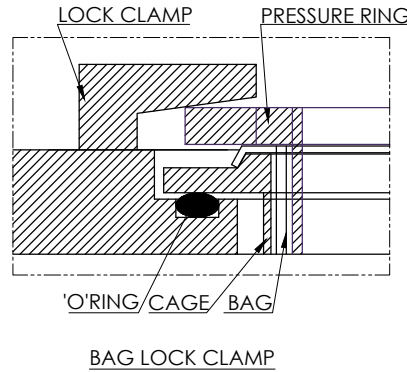
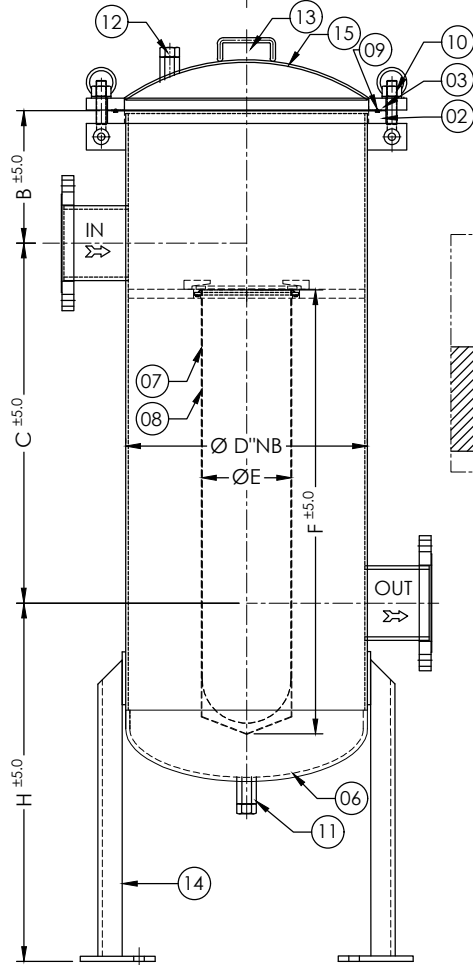
NOTE :-

1. ALL DIMENSIONS ARE IN mm. IF NOT SPECIFIED.
2. END CONNECTION AS PER ANSI B 16.5, 150# RF

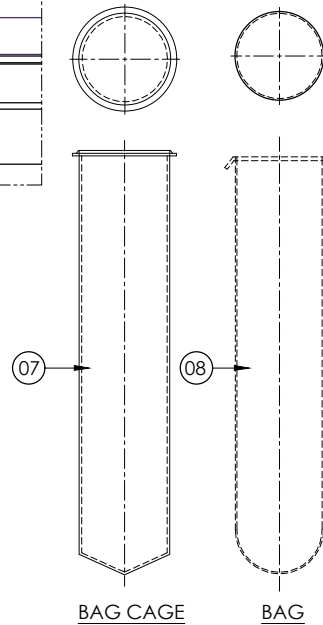
CLIENT :-		QTY:-	
P.O. No:-		W.O.NO.:-	
SCALE :-	SHEET :-	DRAWING No.	REV.
FILE :-	DATE :- 27/03/2026	AFS-2503-150#-2BAG	00
TITLE :- BAG TYPE FILTER ASME 150# FOR 2 BAG		PROJECTION :-	
 PLOT NO-152/2 ROAD-5, G.I.D.C.KATHWADA, AHMEDABAD. www.strainersindia.com		NAME	DATE
		ACAD BY	GPP 27/03/026
		CHED BY	GPP 27/03/026
		APPD BY	APT 27/03/026



FOUNDATION DETAILS.



BAG LOCK CLAMP



BAG CAGE

BAG

MATERIAL OF CONSTRUCTION

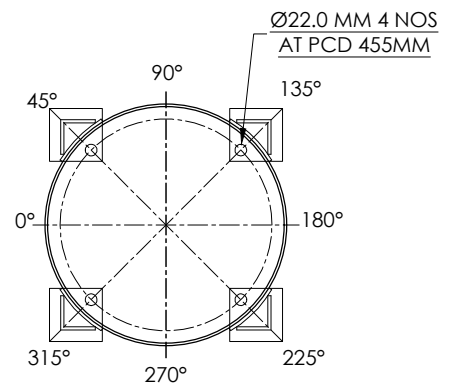
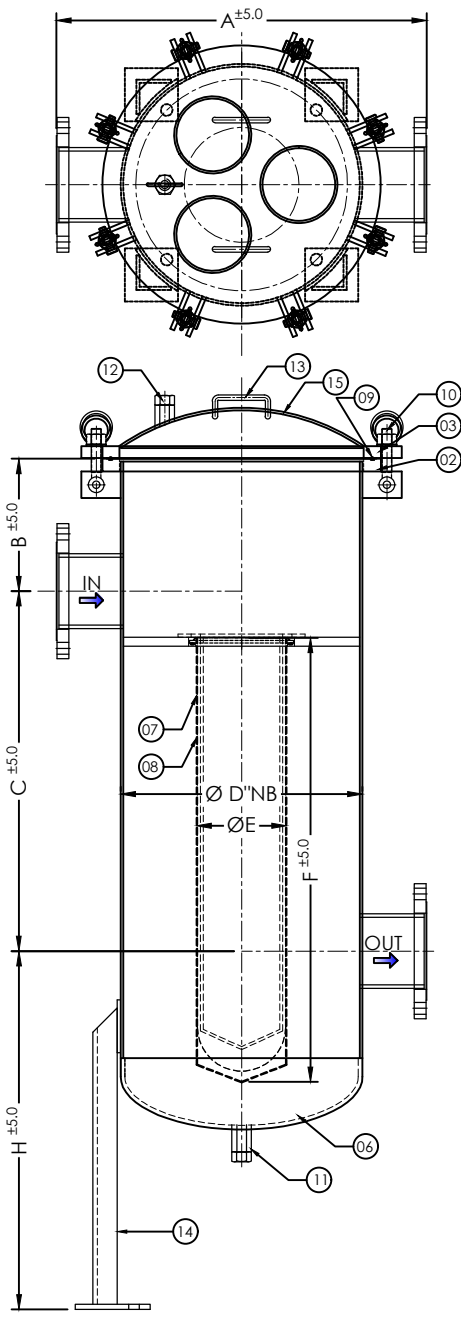
SR. NO.	DISCRIPTION	CARBON STEEL	STAINLESS STEEL		QTY.
			SS 304	SS 316	
1	SHELL	MS	SS 304	SS 316	1
2	SHELL FLANGE	MS	SS 304	SS 316	1
3	COVER FLANGE	MS	SS 304	SS 316	1
4	IN-OUT NOZZLE	MS	SS 304	SS 316	2
5	NOZZLE FLANGE	MS	SS 304	SS 316	2
6	DISHEND	MS	SS 304	SS 316	1
7	P.SHEET	SS 304 (Ø6mm Hole)	SS 304	SS 316 (Ø6mm Hole)	1
8	BAG	PP	Ø7" x 32" LONG MICRONS		2
9	'O' RING	NEOPRENE, EPDM, VITON, NITRILE, NATURAL RUBBER			1
10	EYE BOLT & NUT	IS 1367	ASTM A 193/194 B7/2H (ZINC PLATED)		---
11	DRAIN	ASTM A 105	SS 304	SS 316	1
12	VENT	ASTM A 105	SS 304	SS 316	1
13	HANDLE	MS	SS 304	SS 316	2
14	LEG	MS	SS 304	SS 316	3
15	CROWN	MS	SS 304	SS 316	1

SIZE		DIMENSION						BAG	
INCH	MM	A	B	C	H	ØD	ØE	F	
1-1/2"	40	620	175	675	645	18"	7"	32"	
2"	50	630	225	675	665	18"	7"	32"	
2-1/2"	65	640	225	675	665	18"	7"	32"	
3"	80	650	225	675	665	18"	7"	32"	
4"	100	680	225	680	677	18"	7"	32"	
5"	125	700	250	680	677	18"	7"	32"	

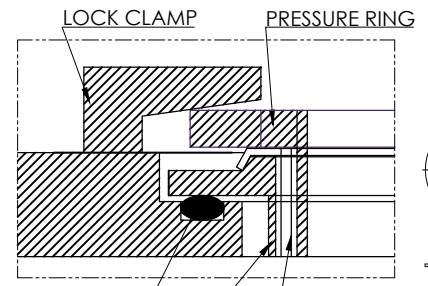
NOTE :-

1. ALL DIMENSIONS ARE IN mm. IF NOT SPECIFIED.
2. END CONNECTION AS PER ANSI B 16.5, 150# RF

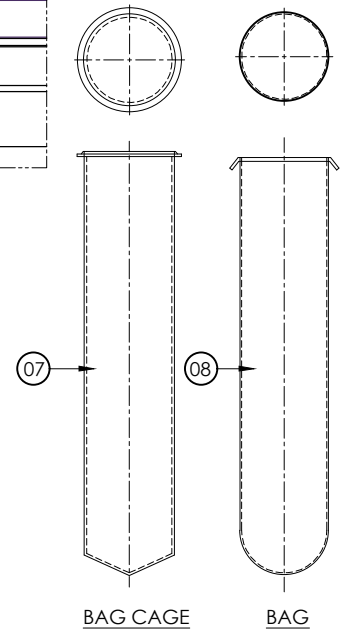
CLIENT :-		QTY :-	
P.O. No :-		W.O.NO. :-	
SCALE :-	SHEET :-	DRAWING No.	REV.
FILE :-	DATE :- 27/03/2026	AFS-2503-150#-STD	00
TITLE :- BAG TYPE FILTER ASME 150# FOR 2 BAG		PROJECTION :-	
 www.strainersindia.com	PLOT NO-152/2	NAME	DATE
	ROAD-5,	GPP	27/03/026
	G.I.D.C.KATHWADA,	GPP	27/03/026
AHMEDABAD.	APPD BY	APT	27/03/026



FOUNDATION DETAIL



BAG LOCK CLAMP



BAG CAGE

BAG

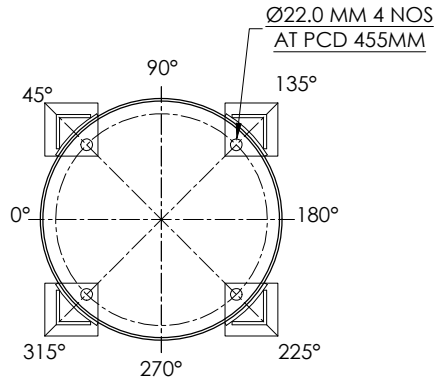
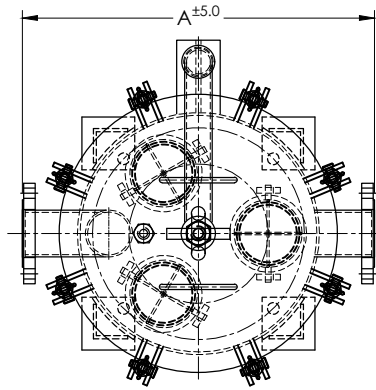
MATERIAL OF CONSTRUCTION

SR. NO.	DISCRIPTION	CARBON STEEL	STAINLESS STEEL		QTY.
			SS 304	SS 316	
1	SHELL	MS	SS 304	SS 316	1
2	SHELL FLANGE	MS	SS 304	SS 316	1
3	COVER FLANGE	MS	SS 304	SS 316	1
4	IN-OUT NOZZLE	MS	SS 304	SS 316	2
5	NOZZLE FLANGE	MS	SS 304	SS 316	2
6	DISHEND	MS	SS 304	SS 316	1
7	P.SHEET	SS304(Ø6HOLE)	SS 304	SS 316	1
8	BAG	PP	Ø7" x 32"LONG MICRONS		3
9	'O' RING	NEOPRENE,EPDM VITON,NITRILE,NATURAL RUBBER			1
10	EYE BOLT & NUT	IS 1367	ASTM A193/194 B7/2H(ZINCPLATED)		8
11	DRAIN	ASTM A 105	SS 304	SS 316	1
12	VENT	ASTM A 105	SS 304	SS 316	1
13	HANDLE	MS	SS 304	SS 316	2
14	LEG	MS	SS 304	SS 316	4
15	CROWN	MS	SS 304	SS 316	1

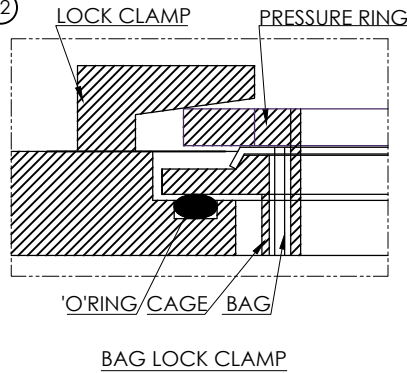
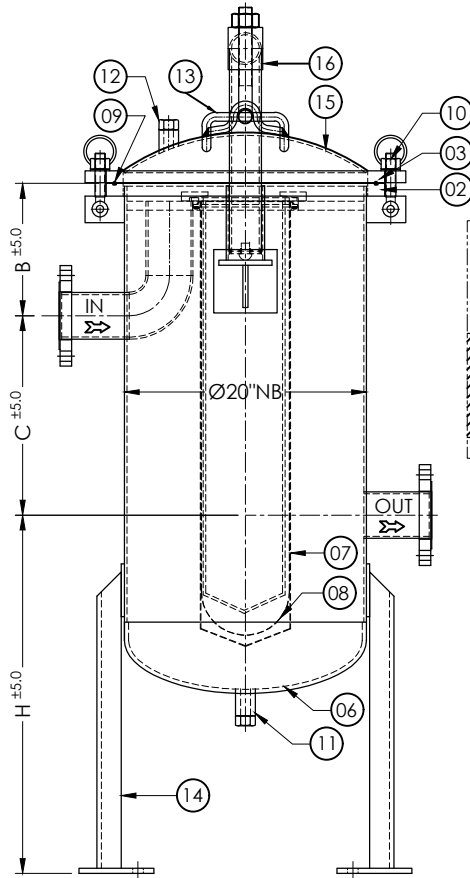
SIZE		DIMENSION					BAG		
INCH	MM	A	B	C	H	ØD	ØE	F	
1 ½"	40	680	175	790	435	20"	7"	32"	
2"	50	735	175	790	435	20"	7"	32"	
2 ½"	65	745	175	790	435	20"	7"	32"	
3"	80	755	175	790	450	20"	7"	32"	
4"	100	760	175	790	450	20"	7"	32"	

NOTE :- ALL DIMENSIONS ARE IN mm IF NOT SPECIFIED.

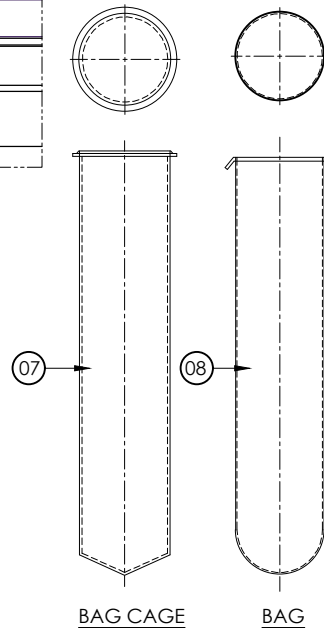
CLIENT :-		QTY :-	
P.O. No :-		W.O.NO. :-	
SCALE :-	SHEET :-	DRAWING No.	REV.
FILE :-	DATE :- 28/03/2026	AFS-2503-150#-3BAG-STD	00
TITLE :- BAG TYPE FILTER ASME 150# FOR 3 BAG		PROJECTION :-	
 www.strainersindia.com		PLOT NO-152/2	
		ROAD-5,	
		G.I.D.C.KATHWADA, AHMEDABAD.	
ACAD BY	GPP	NAME	DATE
CHED BY	GPP		28/03/026
APPD BY	APT		28/03/026



FOUNDATION DETAIL



BAG LOCK CLAMP



BAG CAGE

BAG

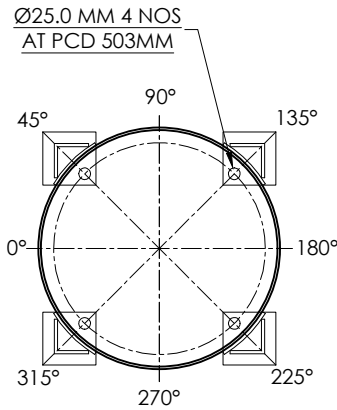
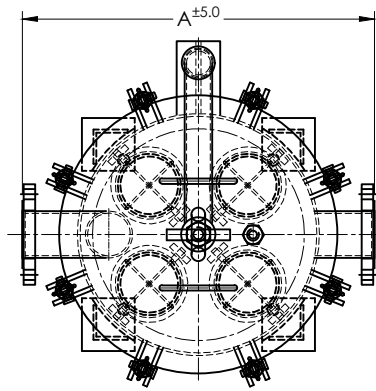
MATERIAL OF CONSTRUCTION

SR. NO.	DISCRIPTION	CARBON STEEL	STAINLESS STEEL		QTY.
			SS 304	SS 316	
1	SHELL	MS	SS 304	SS 316	1
2	SHELL FLANGE	MS	SS 304	SS 316	1
3	COVER FLANGE	MS	SS 304	SS 316	1
4	IN-OUT NOZZLE	MS	SS 304	SS 316	2
5	NOZZLE FLANGE	MS	SS 304	SS 316	2
6	DISHEND	MS	SS 304	SS 316	1
7	BAG CAGE	SS304 (Ø6 HOLE)	SS 304	SS 316	3
8	BAG	PP	(Ø7" x 32"LONG)		3
9	'O' RING	NEOPRENE, EPDM, VITON, NITRILE, NATURAL RUBBER			1
10	EYE BOLT & NUT	IS 1367	ASTM A 193/194 B7/2H (ZINC PLATED)		8
11	DRAIN	ASTM A 105	SS 304	SS 316	1
12	VENT	ASTM A 105	SS 304	SS 316	1
13	HANDLE	MS	SS 304	SS 316	2
14	LEG	MS	SS 304	SS 316	4
15	CROWN	MS	SS 304	SS 316	1
16	DAVIT ARM	MS	SS 304	SS 316	1

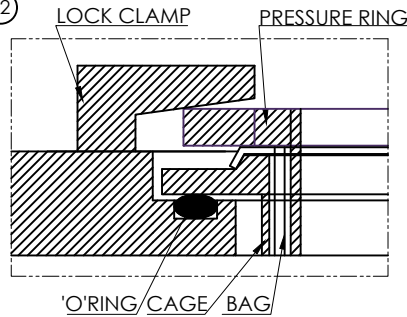
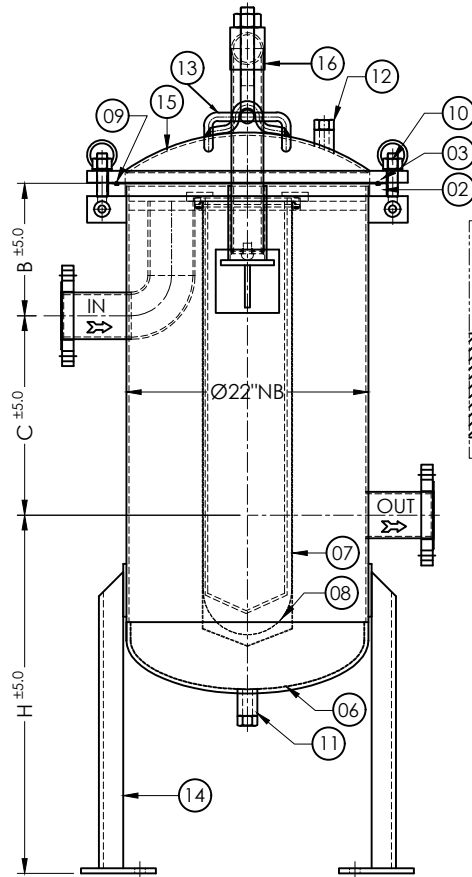
SIZE		DIMENSION			
INCH	MM	A	B	C	H
1 1/2"	40	680	175	585	440
2"	50	735	175	585	440
2 1/2"	65	750	200	560	440
3"	80	755	225	535	440
4"	100	775	250	500	440

NOTE :- ALL DIMENSIONS ARE IN mm IF NOT SPECIFIED.

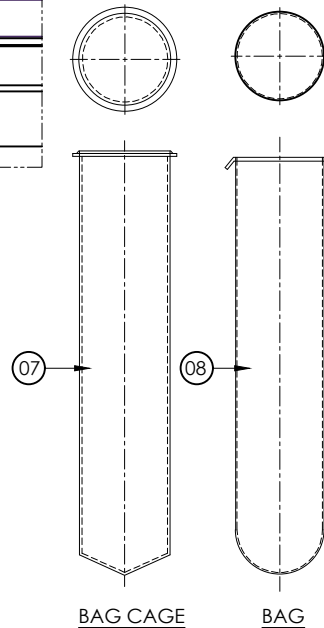
CLIENT :-		QTY :-	
P.O. No :-		W.O. NO. :-	
SCALE :-	SHEET :-	DRAWING No.	REV.
FILE :-	DATE :- 28/03/2026	AFS-2503-150#3BAG	00
TITLE :- 3 BAG ANSI 150# BAG TYPE FILTER FOR		PROJECTION :-	
 www.strainersindia.com		PLOT NO-152/2	NAME
		ROAD-5,G.I.D.C.	GPP
		KATHWADA,	DATE
		AHMEDABAD.	28/03/026
		APPD BY	APT
			28/03/026



FOUNDATION DETAIL



BAG LOCK CLAMP



BAG CAGE

BAG

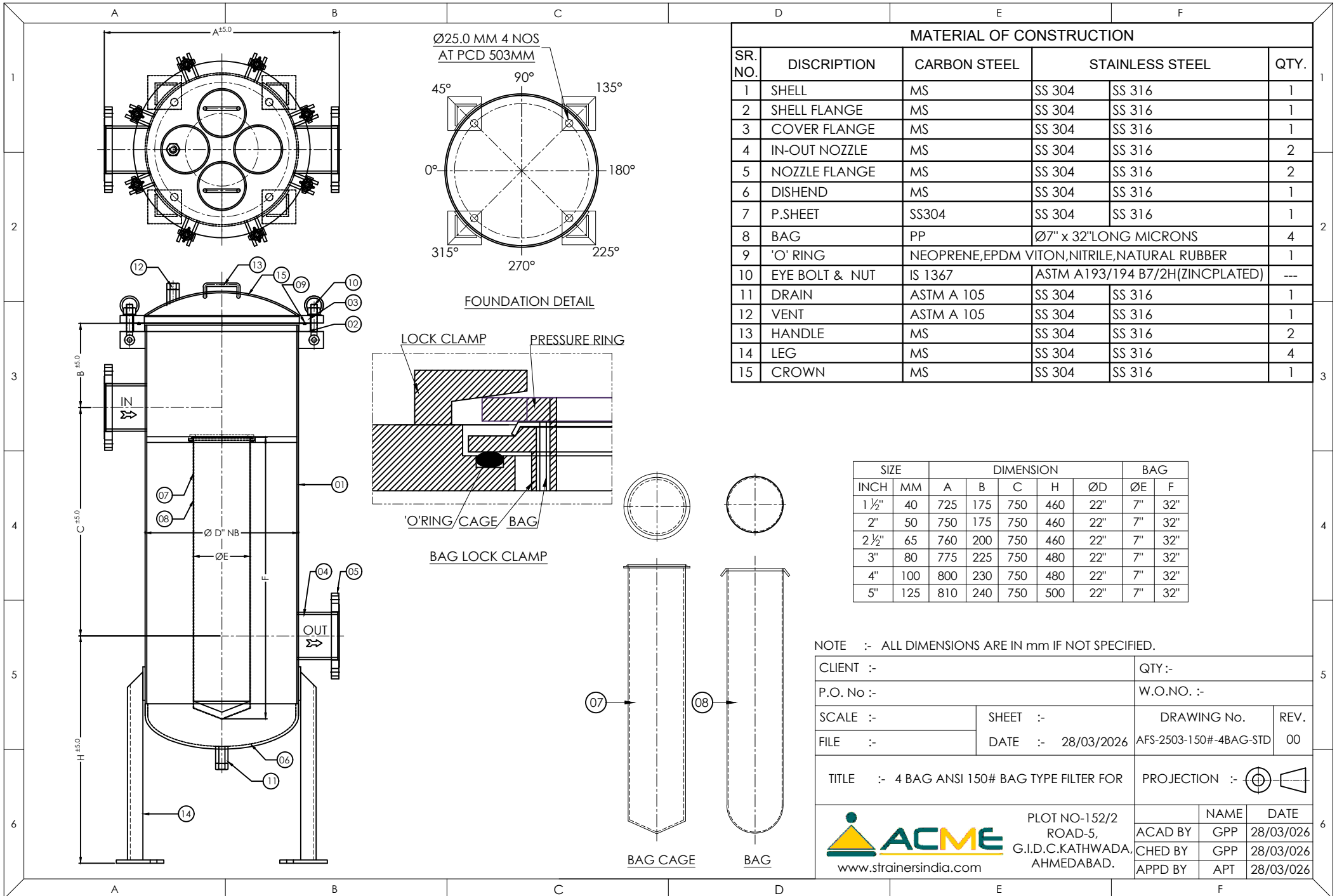
MATERIAL OF CONSTRUCTION

SR. NO.	DISCRIPTION	CARBON STEEL	STAINLESS STEEL		QTY.
			SS 304	SS 316	
1	SHELL	MS	SS 304	SS 316	1
2	SHELL FLANGE	MS	SS 304	SS 316	1
3	COVER FLANGE	MS	SS 304	SS 316	1
4	IN-OUT NOZZLE	MS	SS 304	SS 316	2
5	NOZZLE FLANGE	MS	SS 304	SS 316	2
6	DISHEND	MS	SS 304	SS 316	1
7	BAG CAGE	SS304(Ø6HOLE)	SS 304	SS 316	4
8	BAG	PP	(Ø7" x 32"LONG)		4
9	'O' RING	EPDM			1
10	EYE BOLT & NUT	IS 1367	IS 1367		8
11	DRAIN	ASTM A 105	SS 304	SS 316	1
12	VENT	ASTM A 105	SS 304	SS 316	1
13	HANDLE	MS	SS 304	SS 316	2
14	LEG	MS	SS 304	SS 316	4
15	CROWN	MS	SS 304	SS 316	1
16	DAVIT ARM	MS	SS 304	SS 316	1

SIZE		DIMENSION			
INCH	MM	A	B	C	H
1 1/2"	40	725	175	560	460
2"	50	750	175	540	460
2 1/2"	65	760	200	540	460
3"	80	775	225	500	460

NOTE :- ALL DIMENSIONS ARE IN mm IF NOT SPECIFIED.

CLIENT :-		QTY:-	
P.O. No:-		W.O.NO.:-	
SCALE :-	SHEET :-	DRAWING No.	REV.
FILE :-	DATE :- 28/03/2026	AFS-2503-150#4BAG	00
TITLE :- 4 BAG ANSI 150# BAG TYPE FILTER FOR		PROJECTION :-	
 www.strainersindia.com	PLOT NO-152/2 ROAD-5,G.I.D.C. KATHWADA, AHMEDABAD.		NAME
	ACAD BY	GPP	DATE
	CHED BY	GPP	28/03/026
	APPD BY	APT	28/03/026

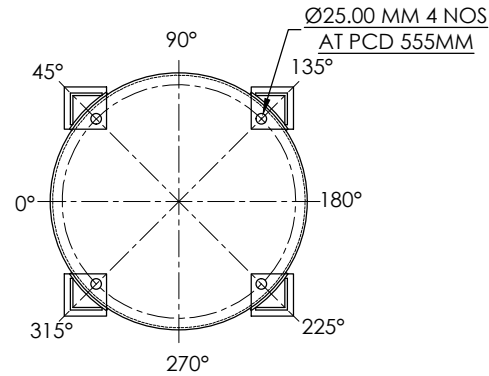
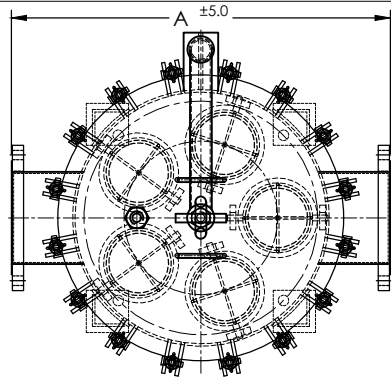


MATERIAL OF CONSTRUCTION					
SR. NO.	DISCRIPTION	CARBON STEEL	STAINLESS STEEL		QTY.
1	SHELL	MS	SS 304	SS 316	1
2	SHELL FLANGE	MS	SS 304	SS 316	1
3	COVER FLANGE	MS	SS 304	SS 316	1
4	IN-OUT NOZZLE	MS	SS 304	SS 316	2
5	NOZZLE FLANGE	MS	SS 304	SS 316	2
6	DISHEND	MS	SS 304	SS 316	1
7	P.SHEET	SS304	SS 304	SS 316	1
8	BAG	PP	Ø7" x 32" LONG MICRONS		4
9	'O' RING	NEOPRENE, EPDM VITON, NITRILE, NATURAL RUBBER			1
10	EYE BOLT & NUT	IS 1367	ASTM A 193/194 B7/2H(ZINCPLATED)		---
11	DRAIN	ASTM A 105	SS 304	SS 316	1
12	VENT	ASTM A 105	SS 304	SS 316	1
13	HANDLE	MS	SS 304	SS 316	2
14	LEG	MS	SS 304	SS 316	4
15	CROWN	MS	SS 304	SS 316	1

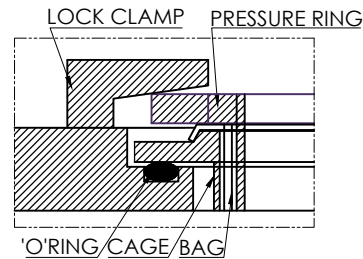
SIZE		DIMENSION					BAG		
INCH	MM	A	B	C	H	ØD	ØE	F	
1 1/2"	40	725	175	750	460	22"	7"	32"	
2"	50	750	175	750	460	22"	7"	32"	
2 1/2"	65	760	200	750	460	22"	7"	32"	
3"	80	775	225	750	480	22"	7"	32"	
4"	100	800	230	750	480	22"	7"	32"	
5"	125	810	240	750	500	22"	7"	32"	

NOTE :- ALL DIMENSIONS ARE IN mm IF NOT SPECIFIED.

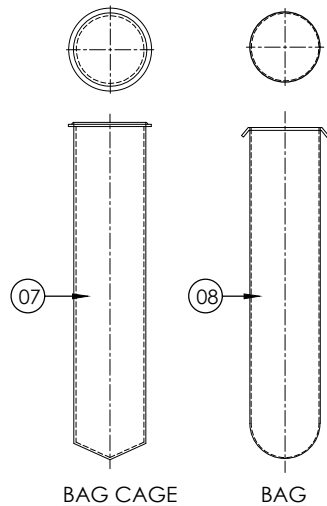
CLIENT :-		QTY :-	
P.O. No :-		W.O.NO. :-	
SCALE :-	SHEET :-	DRAWING No.	REV.
FILE :-	DATE :- 28/03/2026	AFS-2503-150#-4BAG-STD	00
TITLE :- 4 BAG ANSI 150# BAG TYPE FILTER FOR		PROJECTION :-	
 www.strainersindia.com	PLOT NO-152/2 ROAD-5, G.I.D.C.KATHWADA, AHMEDABAD.		NAME
	ACAD BY	GPP	DATE
	CHED BY	GPP	28/03/026
	APPD BY	APT	28/03/026



FOUNDATION DETAIL

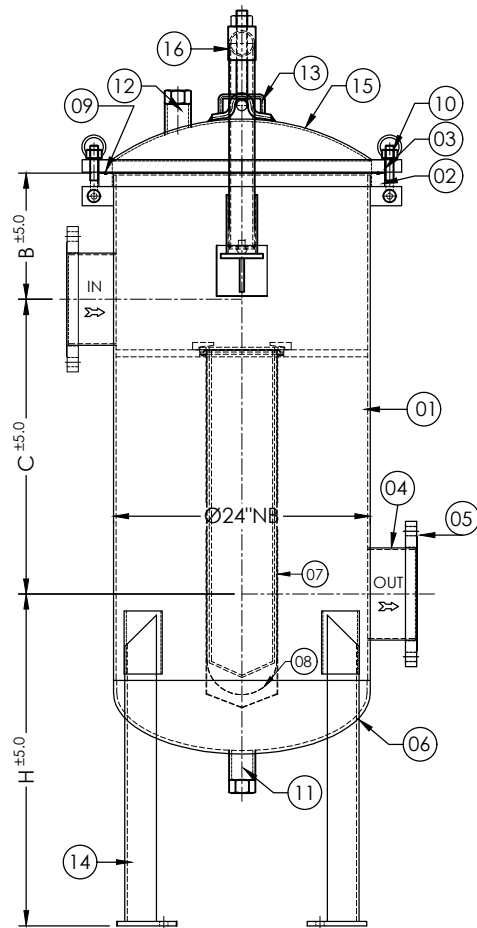


BAG LOCK CLAMP



BAG CAGE

BAG



MATERIAL OF CONSTRUCTION

SR. NO.	DISCRIPTION	CARBON STEEL	STAINLESS STEEL		QTY.
			SS 304	SS 316	
1	SHELL	MS	SS 304	SS 316	1
2	SHELL FLANGE	MS	SS 304	SS 316	1
3	COVER FLANGE	MS	SS 304	SS 316	1
4	IN-OUT NOZZLE	MS	SS 304	SS 316	2
5	NOZZLE FLANGE	MS	SS 304	SS 316	2
6	DISHEND	MS	SS 304	SS 316	1
7	BAG CAGE	SS304 (Ø6 HOLES)	SS 304	SS 316	5
8	BAG	PP	(Ø7" x 32" LONG)		5
9	'O' RING	EPDM			1
10	EYE BOLT & NUT	IS 1367			20
11	DRAIN	ASTM A 105	SS 304	SS 316	1
12	VENT	ASTM A 105	SS 304	SS 316	1
13	HANDLE	MS	SS 304	SS 316	2
14	LEG	MS	SS 304	SS 316	4
15	CROWN	MS	SS 304	SS 316	1
16	DAVIT ARM	MS	SS 304	SS 316	1

SIZE		DIMENSION			
INCH	MM	A	B	C	H
3"	80	820	225	680	825
4"	100	840	250	680	825
5"	125	850	250	695	825
6"	150	870	275	700	825
8"	200	900	300	700	850

NOTE :- ALL DIMENSIONS ARE IN mm IF NOT SPECIFIED.

CLIENT :-		QTY :-	
P.O. No :-		W.O.NO. :-	
SCALE :-	SHEET :-	DRAWING No.	REV.
FILE :-	DATE :- 28/03/2026	AFS-2503-150# 5BAG	00
TITLE :- 5BAG ANSI 150# BAG TYPE FILTER FOR		PROJECTION :-	
 www.strainersindia.com	PLOT NO-152/2		NAME
	ROAD-5,		GPP
	G.I.D.C.KATHWADA,		28/03/2026
AHMEDABAD.		APPD BY	APR
			28/03/2026