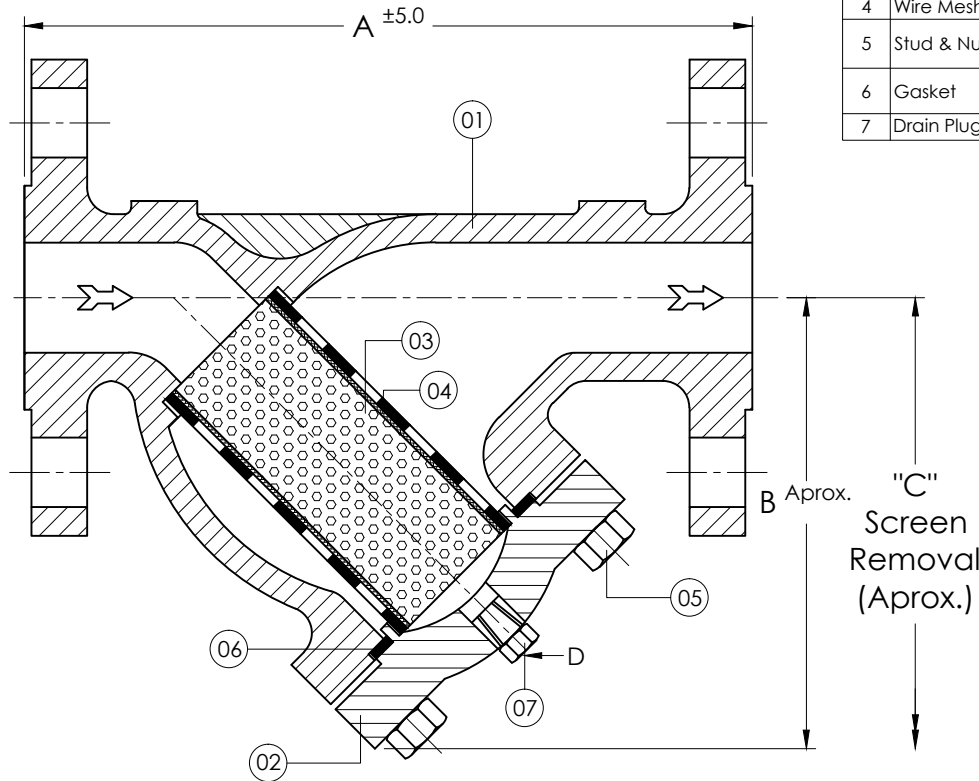


Sr. No.	Description	CARBON STEEL	SS 304	SS 316	Qty.
1	Body	ASTM A 216 GR.WCB	ASTM A 351GR. CF8	ASTM A 351 GR. CF8M	1
2	Cover	ASTM A 216 GR.WCB	ASTM A 351 GR. CF8	ASTM A 351 GR. CF8M	1
3	P. Sheet	SS 304 Ø6mm hole	SS 304 Ø6mm hole	SS 316 Ø6mm hole	1
4	Wire Mesh	SS 304	SS 304	SS 316	1
5	Stud & Nut	ASTM A 193 / 194 Gr. B7/ 2H	ASTM A 193 / 194 Gr. B7/ 2H (Zinc Plated)	ASTM A 193 / 194 Gr. B7/ 2H (Zinc Plated)	---
6	Gasket	SS 316 SPW WITH GRAPHITE FILLER	SS 316 SPW WITH GRAPHITE FILLER	SS 316 SPW WITH GRAPHITE FILLER	1
7	Drain Plug	ASTM A 105	ASTM A 182 F 304	ASTM A 182 F 316	1



TECHNICAL DATA :-

1. END FLANGE & DRILL I/A/W ASME B 16.5 600# RF.
2. WALL THICKNESS IN ACCORDANCE WITH API 600.
3. TESTING STANDARD IN ACCORDANCE WITH API 598.

NOTE:-

1. ALL DIMENSIONS ARE IN mm. IF NOT SPECIFIED.
2. M.O.C. AS PER PROCESS REQUIREMENT.

* WE ARE CONTINUOUSLY IMPROVING OUR PRODUCT.

WE RESERVE THE RIGHT TO CHANGE DETAIL WITH OUT PRIOR NOTICE.

Size		DIMENSION				Weight
IN	MM	A	B	C	D (INCH)	kgs (Aprox.)
1 "	25	250	185	310	½ "	10
2 "	50	310	242	400	½ "	24
2-1/2 "	65	350	282	475	½ "	36
3 "	80	370	303	495	½ "	44
4 "	100	490	395	645	½ "	98
6 "	150	590	511	830	¾ "	209

Client :-		QTY. :-	
P.O. No. :-		WO. No. :-	
Scale :-	Sheet :-	Drawing No.	REV.
File :-	Date:- 08/06/ 2015	AFS-2506-600#-STD	00
Title :- 600# "Y" STRAINER FLANGED END		PROJECTION	
 www.strainersindia.com	PLOT NO-152/2 ROAD-5,G.I.D.C., KATHWADA, AHMEDABAD.	Name	Date
		ACAD BY GPP	08/06/2014
		CHED BY GPP	08/06/2014
		APPD BY AM	08/06/2014